

**LAKE TAHOE WINDJAMMERS YC
GENERAL
SAILING INSTRUCTIONS**

2011

REV: Sept. 15, 2010



**For the Wednesday Night Beer Can races see:
WYC BEER CAN SAILING INSTRUCTIONS**

1. RULES

1.1 All races will be sailed under the management of the Lake Tahoe Windjammers Yacht Club Race Committee and in accordance with the current International Sailing Federation (ISAF) as adopted by the United States Sailing Association (USS Rules), except as modified by these rules or supplemental instructions as provided by the Race Committee. (See 12. below)

1.2 All boats at a minimum, shall be equipped with safety equipment as required by the US Coast Guard regulations.

1.2.1 A “Lifesling” or a boarding ladder is required on all yachts with freeboard in excess of 14 inches. The lowest rung on the boarding ladder must extend at least 15 inches below the water when mounted.

1.3 Rule 55, Flags, is amended by the WYC to allow the club burgee and the national ensign or the yacht ensign, and the flag of current club officers to be displayed while racing.

2. ENTRIES

2.1 Races are open to all single hulled keel boats, longer than 19 feet overall, that have completed the Windjammers Yacht Club Entry Form, have current liability insurance, and have paid the required entry fee (see 10 below).

2.2 All boats entered in a race are required to display their sail number on the mainsail.

3. SCHEDULE

3.1 The schedule of all races is given in the WYC Race Schedule. Warning Signals for all scheduled races will be hoisted at approximately 1200 hours unless otherwise noted.

3.2 In case of cancellation or abandonment of a race, that race may be re-scheduled at a later date.

4. COURSES

4.1 The race courses will be sailed around marks shown (see Appendix A).

4.2 NUMBERED COURSES to be sailed will be selected from the list of COURSES (see Appendix B). Course to be sailed will be indicated by flag signals, placards or hail by the race committee boat.

4.3 In order to increase visibility, a larger MARK may be attached to a regular WYC racing MARK. In this case both MARKS shall be considered as one.

5. START and FINISH

5.1 Each participant shall check in with the committee boat on station prior the first warning signal of the race either by hailing or by VHF Radio CH 68.

5.2 The committee boat and other objects such as a dinghy or marks tied to within 15 feet of the committee boat shall be considered part of the “committee boat”.

5.3 The START will be in accordance with USS Rule 26. If STARTS are by division, they will be at 5-minute intervals.

5.4 The STARTING LINE will be, unless otherwise indicated, between the CG Bouy “O” near the entrance of Tahoe Keys, also known as Club Mark (CM) and an orange shape on the committee boat, or the mast of the committee boat.

5.5 Individual recalls will be signaled in accordance with USS Rule 29.1. General recalls will be signaled in accordance with USS Rule 29.2. If a general recall has been signaled, that division will START after all other divisions have STARTED

5.6 The FINISH of each race shall be between the CG Bouy “O” and an orange shape on the committee boat or the mast of the committee boat unless otherwise indicated (i.e. shortened course).

5.7 Finishing under power. A boat that STARTS a race but crosses the FINISH LINE under power or under tow will be scored last in her division. If two or more boats in the same division FINISH under the provisions of this rule they will be assigned finishing positions of last place in their division or a lower position (i.e. higher score) if the Race Committee so determines. This rule is introduced to avoid all possible delay in the START of the next race.

5.8 Any boat dropping out of any race, once STARTED, shall notify the race committee either verbally, by VHF radio, or by telephone as soon as possible to avoid unnecessary search and rescue operations. The cost of any such search can be charged to the skipper violating this rule. Any skipper who fails to comply with this requirement can be barred from entering any future race sponsored by this yacht club for a period of up to one year.

5.9 Time limit for each event, unless indicated otherwise, shall be 1900 hours.

5.10 Any boat not FINISHED within 30 minutes of the first boat to FINISH in her division may be scored last place in her division except as noted in 5.7 above.

6. SCORING

6.1 Races in general, shall be scored using a TIME ON TIME PHRF calculation

6.2 The WYC PHRF ratings, which may be derived from the Southern California (SO CAL) PHRF ratings for Area C, shall be used as a basis for handicap scoring. If no SO PHRF handicap has been established for a given boat, contact the WYC Race Committee prior to the date of the race.

6.3 Races shall be scored by using the Low Point Scoring System, USS Rules Appendix A4. A boat that does not FINISH the race (DNF) will be scored with points equal to the total number of boats entered in the race. A boat that does not START a race (DNS) will be scored points equal to the total number of boats entered in the race plus one. A boat that is disqualified from a race (DSQ) will be scored points equal to the total number of boats entered in the race plus two.

6.4 No throw outs will be allowed in series races except as noted in Sailing Instructions posted for that event.

6.5 Ties will be broken according to US RACING RULES A.8

6.6 If the Committee Boat is entered in a regatta of two or more race days, her score in the race in which she serves as a Committee Boat shall be the average of her other scores in that regatta.

6.7 A boat entered in a regatta of 2 or more race days may serve as a Committee Boat no more than one race day

7. INCREASING STABILITY

7.1 Boats equipped with life lines shall sail in accordance with USS Rule 49.2.

7.2 Boats with no lifelines: No person's torso shall extend outward from the deck other than temporarily to perform a task.

7.3 Hiking: Boats factory or class equipped for hiking from a sitting position shall be allowed to do so as intended without any penalty provided that their PHRF rating certificate allows.

7.4 A boat that intends to race with trapeze must, prior to an event, notify the Race Committee of such intent and gain permission to do so. If said boat's handicap has been established without the use of a trapeze, then the Handicap Committee shall have the option to modify the existing handicap to encompass the use of the trapeze.

8. PROTESTS

8.1 Protests must be made in accordance with USS Rule 60.

8.2 Written protests must be filed with a member of the WYC Race Committee within 2 hours after the last boat FINISHES or 2 hours after the event is deemed over.

8.3 Boats involved in a protest will be offered, and may elect, Protest Mediation.

8.4 Appeals may be filed in accordance with USS Rule 70 to the District

Committee, YRA San Francisco Bay, Fort Mason Center, Bldg. 312, San Francisco, CA 94123

9. RADIO COMMUNICATION

9.1 A marine VHF radio is not required, but strongly recommended.

The Race Committee will attempt to monitor CH 16. All Race Committee communications shall be conducted on CH 68 (after initial contact on CH 16 if needed).

10. ENTRY FEES

Entry fees for Regular Club members who are also members in good standing with USSail, shall be stated in the Race Schedule for each event. If not a member of USS, an additional \$5 is assessed. If not a regular member of WYC or another bonafide yacht club, an addition \$10 is assessed. Fees can be paid in advance by mail with completed entry form, or at the Skippers Meeting before the race with a completed entry form. Late entries will be accepted at the Committee Boat up to 15 minutes before the 1st Warning Signal.

11. WASTE MATERIAL

The willful discharge of liquid or solid waste material into the waters of Lake Tahoe is strictly prohibited.

12. SKIPPERS MEETINGS

12.1 Skippers meetings are normally held at 10:00 AM in the vicinity of the Tahoe Keys Marina hoist or at the WYC Cub house. Sign ups shall occur beforehand.

12.2 Changes to the Sailing Instructions for a given race shall be communicated to the racing fleet by the Race Committee by either:

12.2.1 By posting the changes on the WYC bulletin boards near the Chandlery at the Tahoe Keys Marina at least two hours before the Warning Signal for the first race or

12.2.2 Given verbally on the water by the committee boat prior to the Warning Signal with the "L" flag displayed.

APPENDIX A

LTWYC

POSITION OF RACE MARKS

MARK		POSITION
SYMBOL.	NAME (Type)	LATITUDE / LONGITUDE
C	Camp Richardson (yellow cylinder) FLY4s	38° 56' 36" / 120° 02' 00"
O	Club Mark (white can)	38° 56' 43" / 120° 00' 47"
DW	Deep Water (yellow cylinder) FLY4s	38° 57' 34" / 120° 01' 08"
E	Edgewood (yellow cylinder)	38° 58' 15" / 119° 57' 40"
R	Ross Groelz (yellow cylinder)	38° 57' 30" / 119° 59' 45"
TC	Taylor Creek (temp. orange inflate)	38° 56' 43" / 120° 03' 26"
TK	Tahoe Keys (temp. orange inflate)	38° 56' 32" / 120° 01' 00"
P	Regan Beach (white can)	38° 57' 15" / 119° 59' 10"
Q	Zephyr Cove (white can) FL WH 4s	39° 00' 50" / 119° 57' 33"

REFERENCE:

USE LAKE TAHOE CHART 18665 For Navigation

LTWYC RACE MARKS

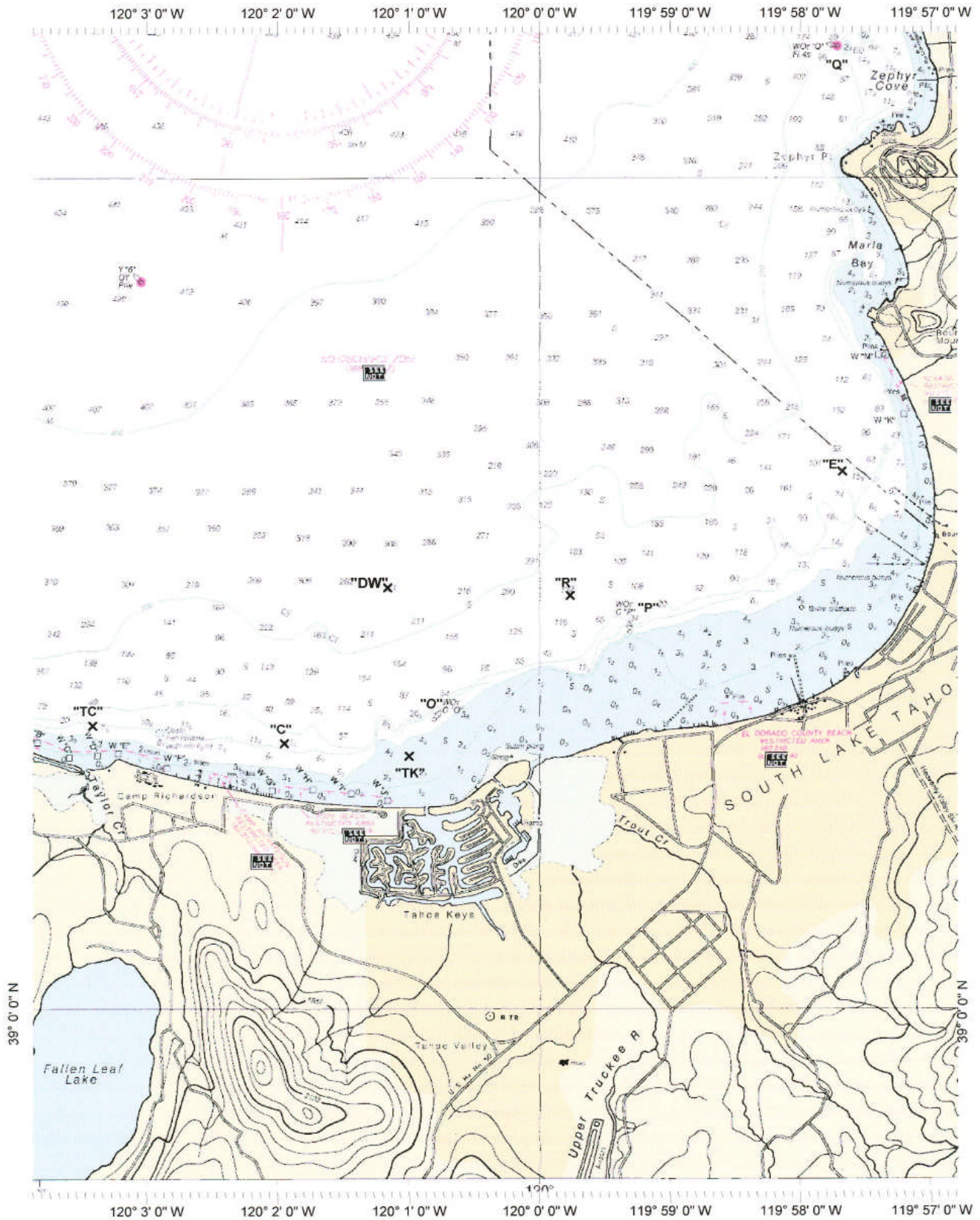


Chart Name: LAKE TAHOE
 Chart ID: 18665_1
 Top Left: 39° 0' 52" N 120° 3' 52" W
 Bottom Right: 38° 53' 54" N 119° 56' 47" W

© MAPTECH, INC.

APPENDIX B

LTWYC RACE COURSES (Date of Changes as noted)

NORTH START

1	O	DWp	O					1.66
2	O	DWp	TKp	O				2.17
3	O	DWs	Rs	O				<u>3.00</u>
4	O	DWp	Cp	TKp	O			3.09
5	O	DWp	Op	DWp	O			3.32
6	O	DWs	Ps	O				<u>3.55</u>
7	O	DWs	Rs	TKs	O			3.58
8	O	DWp	TKp	DWp	O			3.74
9	O	DWp	TKp	DWp	TKp	O		4.25
10	O	DWp	Cp	TKp	DWp	O		4.66
11								
12	O	DWp	Op	DWp	Op	DWp	O	4.98
13	O	DWs	Ps	Cs	O			5.44
14	O	DWs	Es	TKs	O			7.61
15	O	DWs	TKp	DWs	Es	O		9.14
16	O	DWs		Es	O			changed 9/14/10
17	O	DWs	Qs	Es	O			11.79
18	O	DWp	TCp	TKp	DWs	Es	O	11.98

WEST START

20	O	Cp	O					1.9
21	O	Cp	TKp	O				2.03
24	O	Cp	Op	Cp	O			3.8
25	O	Cp	Rp	O				4.01
26	DELETED 9/14/10							
27	O	Cs	DWs	Cp	O			changed 9/14/10
28	O	Cp	Pp	O				4.41
29	O	Cs	DWs	Ps	O			4.85
30	O	Cs	DWp	TCp	O			6.16
31	O	Cs	Rs	Os	Rs	O		6.19
32	O	Cp	Ep	O				8.07
34	O	Cs	DWs	Es	O			8.36
35	O	Cs	Qs	O				11.67
36	O	Cs	Qs	Es	O			13.1

SOUTH START

40	0	TKp	O						.60
41	0	TKs	Cs	O					2.03
42	Deleted 9/14/10								
43	0	TKp	Rp	O					2.76
45	0	TKs	Cs	DWs	O				3.09
46	0	TKp	Rp	DWp	O				3.58
47	0	TKp	Rp	Op	Rp	O			4.94
48	0	TKp	Ep	O					6.73
49	0	TKp	Rp	Cp	Rp	DWp	O		7.52
50	0	TKp	Rs	Ep	DWp	O			7.73
51	0	TKp	Ep	DWp	TKs	Cp	O		9.01
52	0	TKp	Qp	O					10.68
53	0	TKp	Qs	Es	O				12.11

EAST START

60	0	Pp	O						2.52
62	0	Pp	Rp	TKp	O				3.36
61	0	Pp	DWp	TKp	O				4.06
63	0	Pp	DWp	Cp	O				4.85
70	0	Ep	O						6.18
71	Deleted 9/14/10								
72	0	Ep	Qp	O					11.51
73	0	Ep	Qp	Cp	O				13.05

NORTHEAST START

80	0	Rp	O						2.18
81	81	0	Rp	DWp	O				3.00
82	0	Rp	DWp	TKp	O				3.51
83	0	Rp	Op	Rp	O				4.36
84	0	Rp	TKp	O				Changed 9/14/10	
85	0	Rp	Cp	Rp	DWp	O			6.94
86	0	Rp	DWp	Ep	O				8.40
87	0	Rp	Cp	Ep	DWp	O			11.06
90	0	Qp	O						10.08
91	0	Qs	Es	O					11.51
92	DELETED 9/14/10								

92	93	O	Qp	DWp	Ep	O	15.76
----	----	---	----	-----	----	---	-------

FANNETTE ISLAND RACE *Leave Fannett Island either to port or starboard

E	O	DWp	FI*	DWs	O	10.0
---	---	-----	-----	-----	---	------

G	O	TCs	FI*	TCp	Rp	O	12.2
---	---	-----	-----	-----	----	---	------

H	O	DWp	TCs	FI*	TCp	DWs	O	11.8
---	---	-----	-----	-----	-----	-----	---	------

APPENDIX C

PHRF RATINGS FOR WYC BOATS

given here for reference

(SO. CAL PHRF, 2010)

<u>Boat Name</u>	<u>Type</u>	<u>PHRF</u>
1/2 Blind Monkey	J24	174
Airborne	Mor 24	156
Apres Ski	Mor 24	156
Blew	Mor 24	156
Carisma	CAT 30	192
Corsair	OLS 30	96
Cynthia	CAT 27	204
Diane	EXP 27	132
D'Merit	Merit 25	168
Eagle	EXP 27	132
Expressway	EXP 27	132
Free Flight	Mor 24	156
Frog lips	J-24	174
Gypsy wind	CAT 27	204
Legs	Mor 24	156
Lovin Life	Eric-35	150
Luffing Out Loud	EXP 27	132
Luzviminda	SA 20	222
Meiers Run	SA 22	222
Primo	EXP 27	132
Quiet Thing	Rang 22	228
Shooting the Breeze	CAT 27	204
Snow Job	J24	174
Streaker	KIWI 22	210
TU RUFF TO SKI	CAT 27	204
Wind Dance	SCZ 27	138
Windsong	CP DOR 25	252
Wired	Choat 27	156
Zoom Zoom	Melg 24	84

APPENDIX D
LAKE TAHOE WINDJAMMERS YACHT CLUB
PERPETUAL TROPHIES

Tahoe Cup Award : The Tahoe Cup (a silver challis) is awarded to a WYC skipper with the best performing boat through one sailing season. A contender must be a regular member of the LTWYC and must sail the same boat in each event to be given points toward the Cup. Usually seven (7) events will be selected to be counted toward the Tahoe Cup. All boats sailing in any of these events will be awarded points toward the Cup. Scoring will be in accordance with US Sailing Rules, Appendix A based upon overall placement in the event. Winner may be from any division. Recognition will be given to the top point scores in the A/B Division and the C/D Division as well, with his or her name inscribed on a separate plaque.

Southern Crossing: This annual distance (usually greater than 25 n. miles) event will be open to all boats. Awards are by division. Perpetual trophy for overall winner.

Windjammers Perpetual : This annual event, usually toward the end of the season, occurs over two days. A minimum of 5 round the buoy races will score the winners by overall and division. A large ships wheel is the perpetual trophy upon which winner's names will be placed by division.

Commodore Cup: A mid distance event of at least 10 n. miles. The perpetual trophy is an acrylic sailboat presented to the Club through a Gift of Deed. The overall winner of the event will be inscribed on a plaque on the base of the trophy.

Hildinger Cup: Two day regatta, with a minimum of 5 round the buoy races, for Catalina 27's. The perpetual trophy is a challis gifted to the Club, Other boats may be allowed to compete in the regatta, but not for the perpetual trophy.

Fannette Island : Held in September as the last official race of the season. Selecting from various courses, all boats enter Emerald Bay to round Fannette Island either to port or starboard before returning to the finish line. There is a Perpetual trophy.



